

FIGURE 4-19 Shaping of trusses based on internal shears and moments.

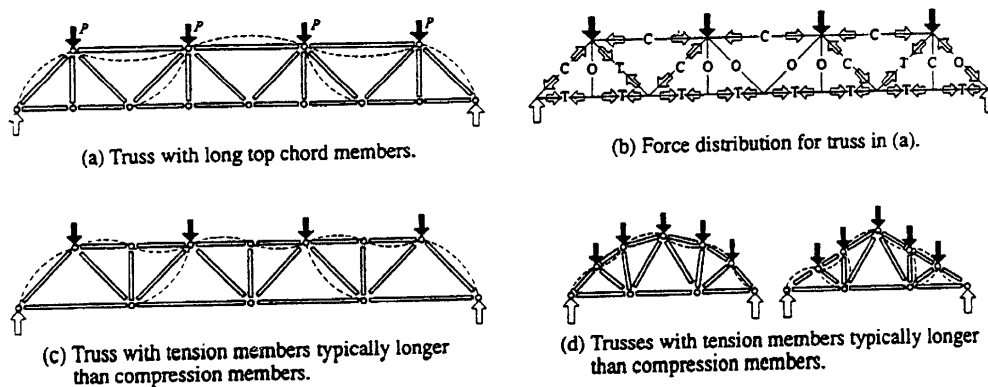


FIGURE 4-25 Member buckling: relation to triangularization pattern.

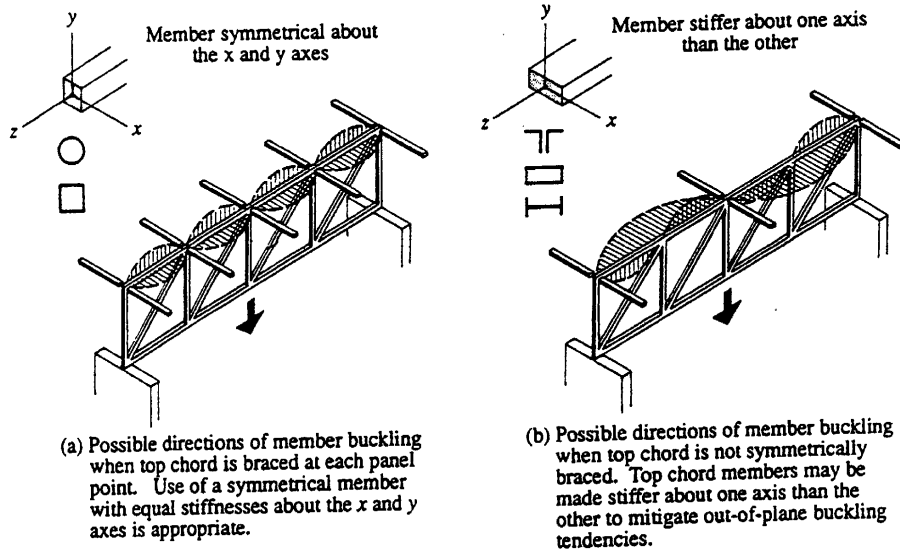


FIGURE 4-26 Lateral buckling of truss members: use of transverse members for bracing.

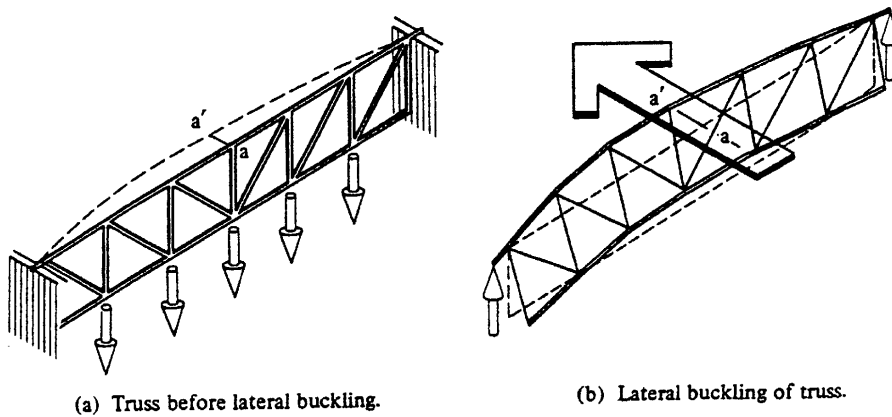
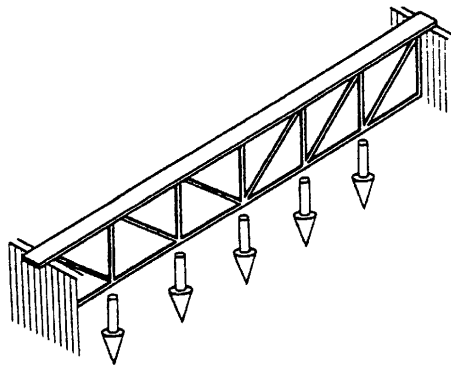
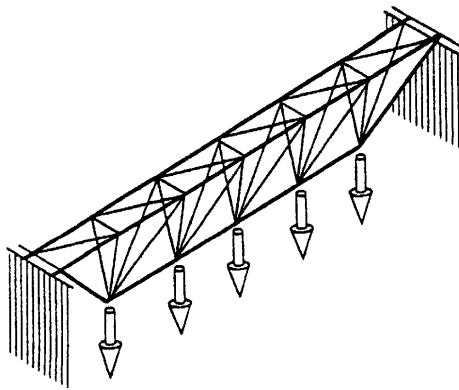


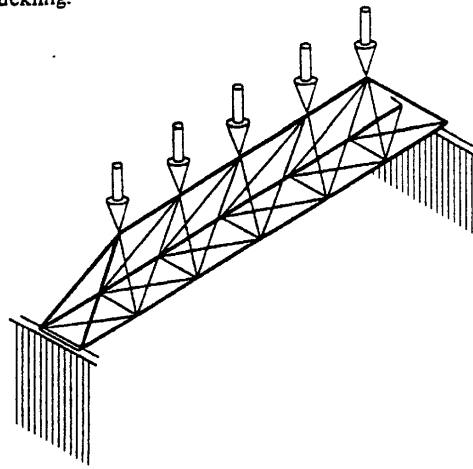
FIGURE 4-27 Lateral buckling of planar truss without any bracing.



(a) Planar truss with stiffened top chord to provide resistance to lateral buckling.



(b) Three-dimensional truss: width of top plane provides resistance to lateral buckling.



(c) Three-dimensional truss: sloped side members provide resistance to lateral buckling.

FIGURE 4-28 Preventing lateral buckling of bar assemblies in free-standing trusses.