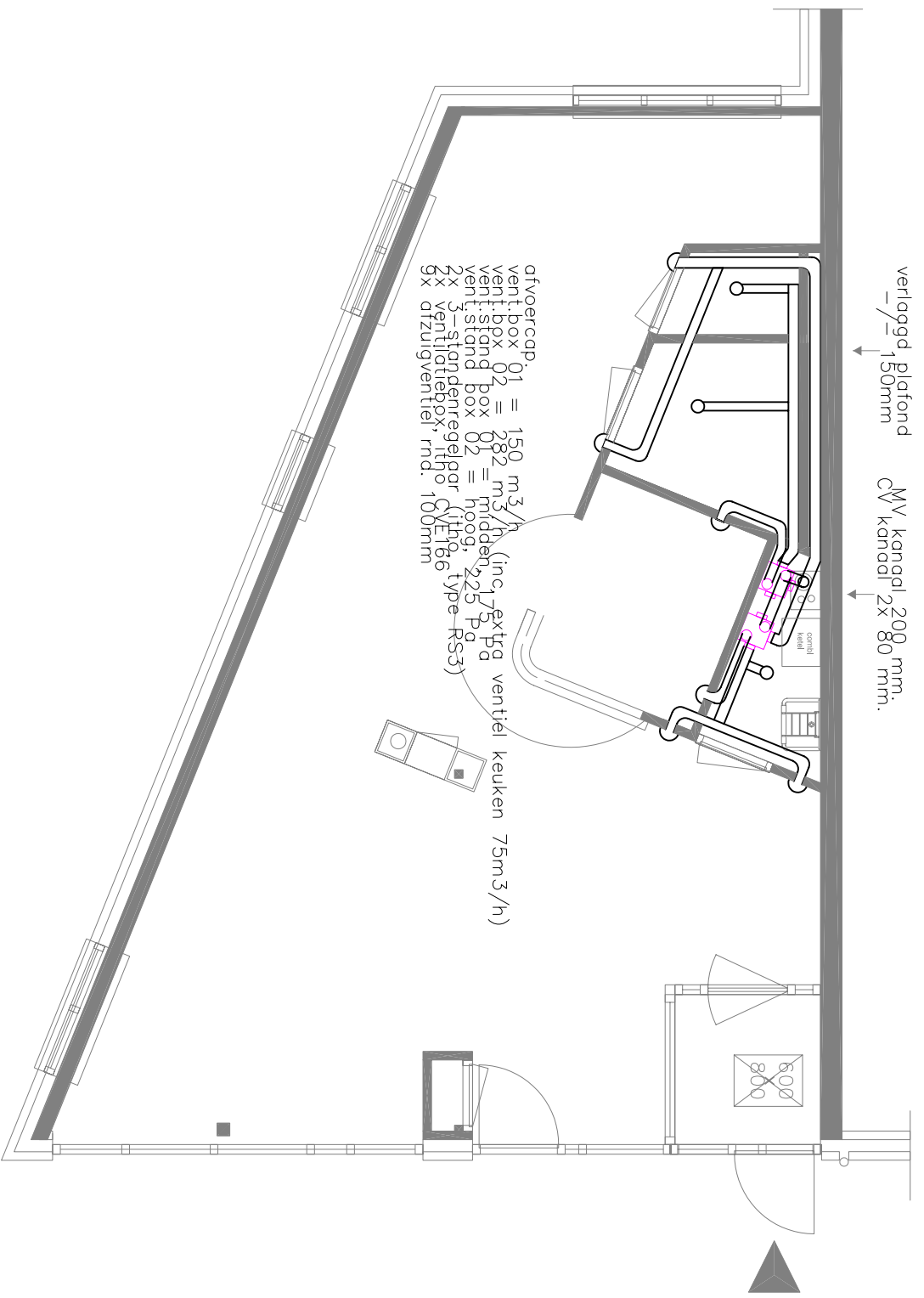
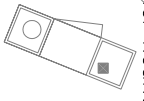


ventilatie capaciteit: 338 m³/h + 75 m³/h = 413 m³/h
natuurlijke toevoer en mechanische afvoer

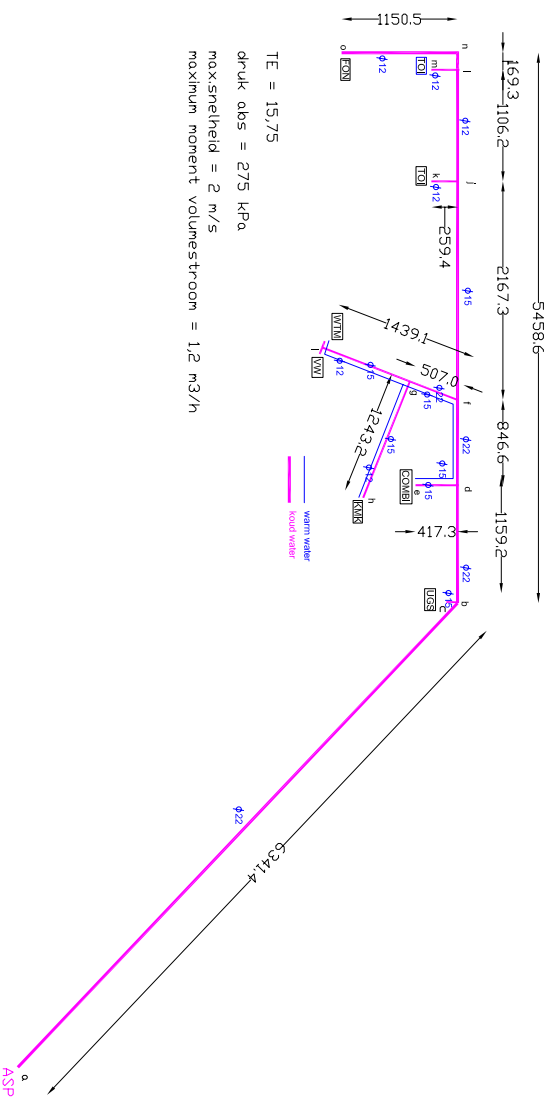


verlaggd plafond 150mm
 CV kanal 2x 200 mm.
 CV kanal 2x 80 mm.

- afvoer cap. 01 = 150 m³/h (inc. extg ventiel keuken 75m³/h)
- ventilbpx 02 = 282 m³/h (inc. extg ventiel)
- ventilstand box 02 = midd. 225 Pa
- 3-standregelaar (1h0, type-RS3)
- 2x ventilatbpx. 1h0
- 9x afzuigventiel md. 100mm



Drinkwaterinstallatie, Sveapark



M.J.ROOS
 30 okt. 2005

BINNENRIOLERING SVEAPARK

